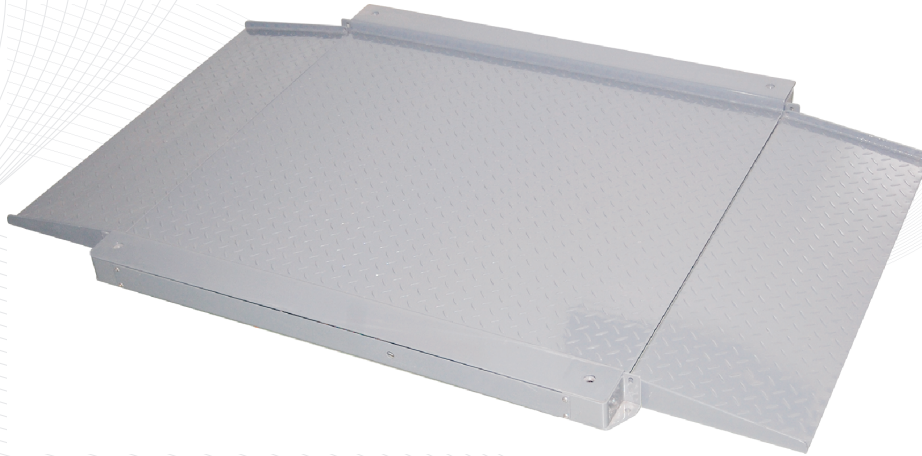


## TFR Floor Scales

### General Specifications

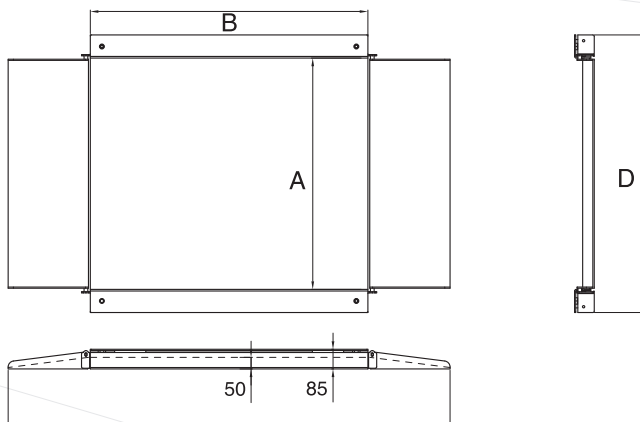
- Capacities 600kg, 1.5t
- Housing Mild Steel
- Max. Divisions 3,000e
- Load cell 4 x 350ohms
- Operating Temperature -10°C~+40°C



- Low profile platform, 50mm deck height with folding ramps
- Easy access junction box cornering from the top
- Rocker pin foot assembly provides stability and durability
- 5m cable with wire mesh pipe
- Optional Weighing indicator and Indicator stands

Model Name	Capacity	Readability	Division	Approx. weight	Approval
TFR-1212-600kg	600kg	0.2kg	3,000e	136kg	CE, OIML
TFR-1212-1.5t	1.5t	0.5kg	3,000e	136kg	CE, OIML

### Dimensions(mm)



C	A(mm)	1200
	B(mm)	1200
	C(mm)	1910
	D(mm)	1400

### Options

